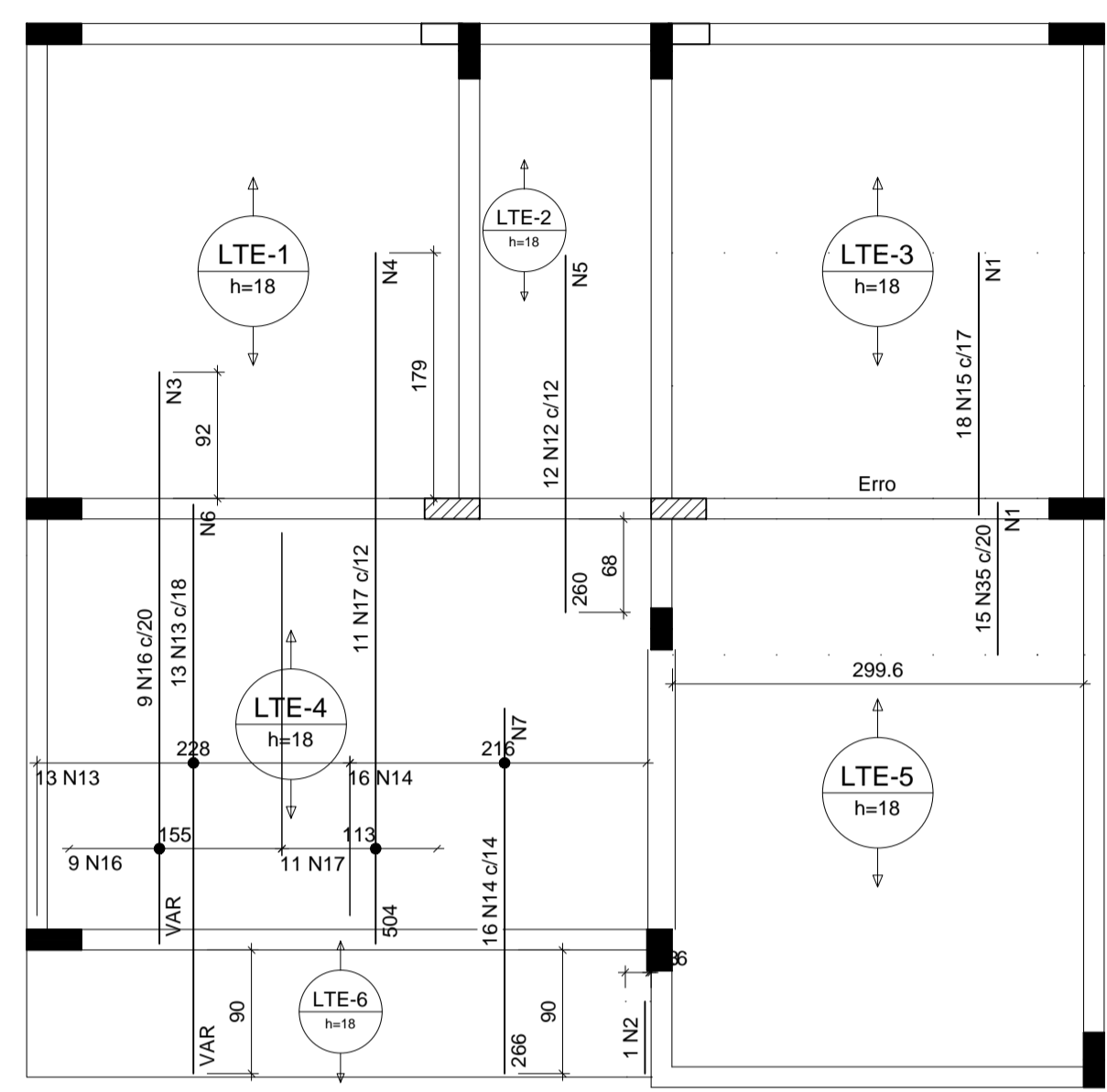


Relação do aço

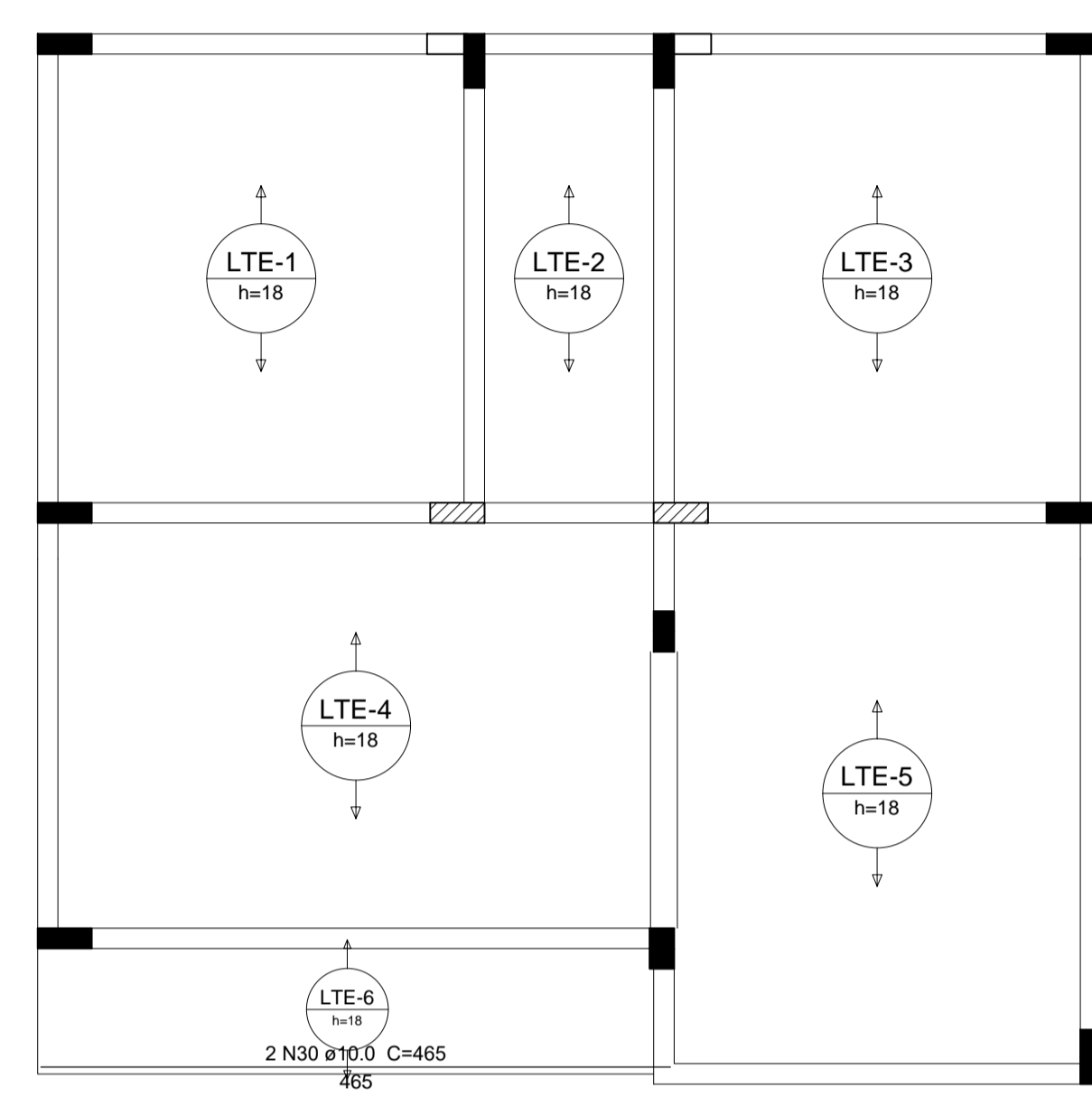
CAIXA:	2xP2	2xP8
TERREO:	VCX-1	VCX-2
	VCX-3	VCX-4
	Negativos Y	Positivos Y
	VTE-5	VTE-6
	VTE-7	VTE-9

AÇO	N	DIAM (mm)	QUANT	C.UNIT (cm)	C.TOTAL (cm)
CA60	1	5.0	17	300	5100
	2	5.0	1	53	53
	3	5.0	21	VAR	VAR
	4	5.0	26	137	3562
	5	5.0	13	140	1820
	6	5.0	21	VAR	VAR
	7	5.0	14	225	3150
	8	5.0	182	78	14196
	9	5.0	34	68	2312
	10	5.0	42	98	4116
	11	5.0	42	24	1008
CA50	12	6.3	12	260	3120
	13	6.3	13	VAR	VAR
	14	6.3	16	266	4256
	15	8.0	18	191	3438
	16	8.0	9	VAR	VAR
	17	8.0	11	504	5544
	18	8.0	6	355	2130
	19	8.0	6	391	2346
	20	8.0	2	266	532
	21	8.0	2	290	580
	22	8.0	2	450	900
	23	8.0	2	486	972
	24	8.0	1	198	198
	25	8.0	3	432	1296
	26	8.0	2	204	408
	27	8.0	2	240	480
	28	8.0	2	199	398
	29	8.0	2	235	470
	30	10.0	2	465	930
	31	10.0	1	138	138
	32	10.0	1	203	203
	33	10.0	2	489	978
	34	10.0	20	247	4940
	35	12.5	15	111	1665



Ferros de distribuição

Ferro	Armadura de distribuição
N15	10 N1 e5.0 c/20 C=300
N35	7 N1 e5.0 c/16 C=300
N16	21 N3 e5.0 c/20 C=VAR
N17	26 N4 e5.0 c/20 C=137
N12	13 N5 e5.0 c/20 C=140
N13	21 N6 e5.0 c/20 C=VAR
N14	14 N7 e5.0 c/20 C=225



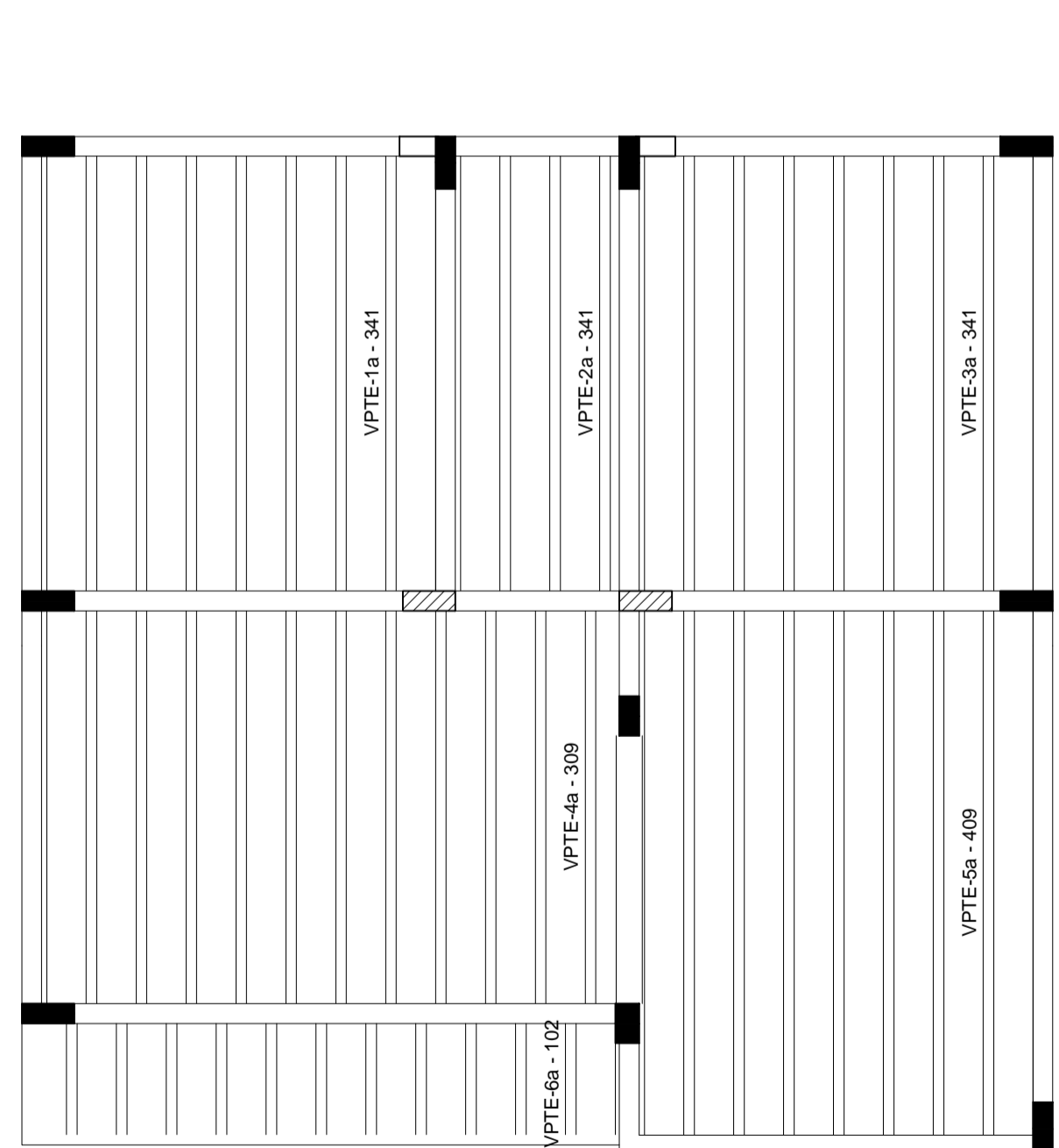
Resumo do aço

AÇO	DIAM (mm)	C.TOTAL (m)	PESO + 10% (kg)
CA50	6.3	127.8	34.4
	8.0	234.5	101.8
	10.0	71.9	48.8
	12.5	16.7	17.6
CA60	5.0	438.7	74.4
PESO TOTAL (kg)			
CA50		202.5	
CA60		74.4	

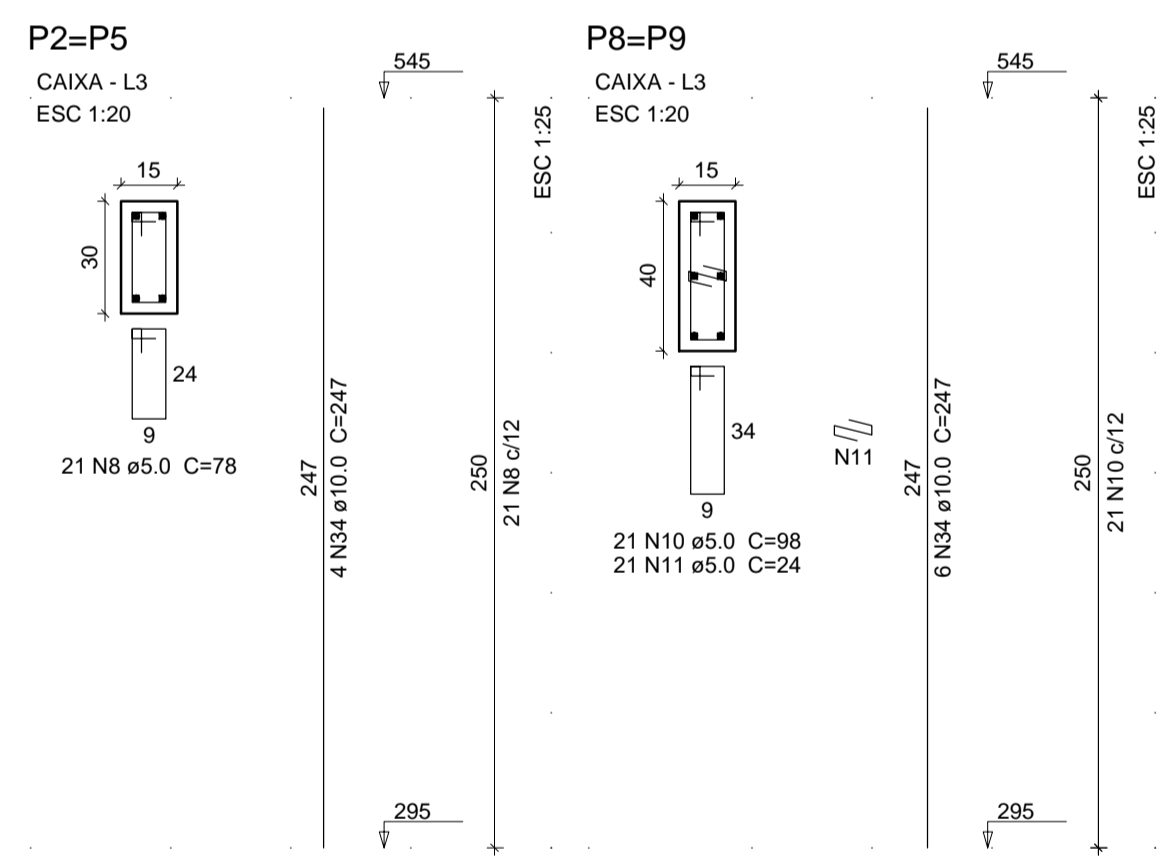
Volume de concreto (C-30) = 5.36 m³
 Volume de concreto (C-25) = 1.7 m³
 Área de forma = 29.46 m²

Armação negativa das lajes do pavimento TERREO (Eixo Y)

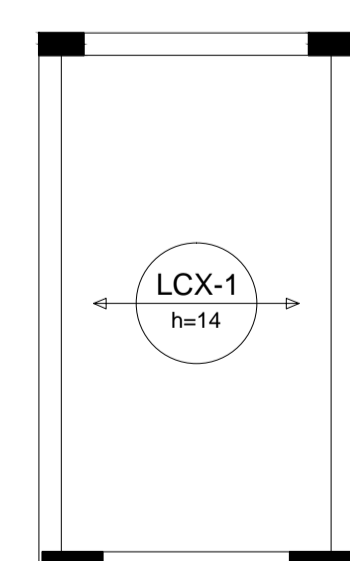
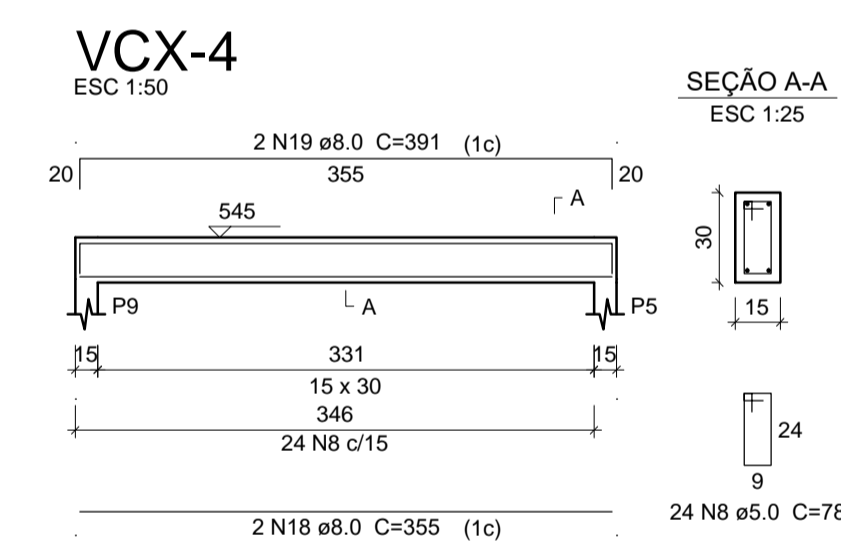
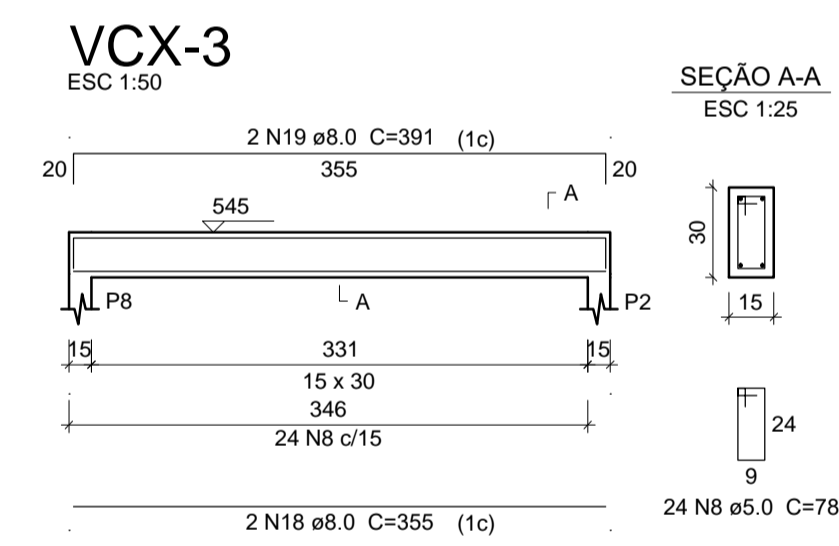
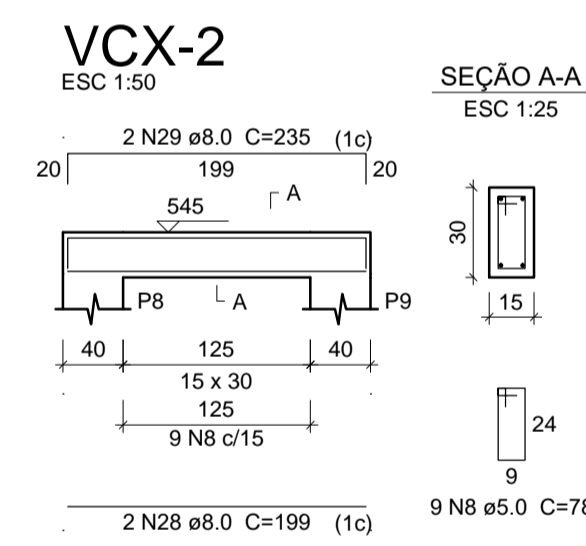
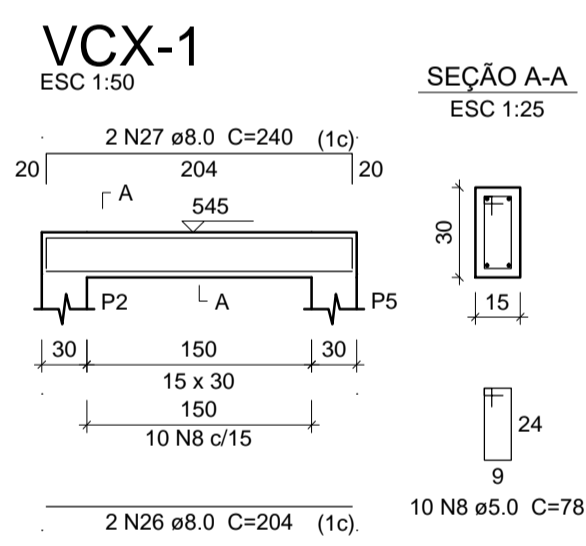
Armação positiva das lajes do pavimento TERREO (Eixo Y)



Planta de vigotas pré-moldadas



Armação positiva das lajes do pavimento CAIXA (Eixo X)



Planta de vigotas pré-moldadas

PROJETO ESTRUTURAL

DETALHAMENTO

Endereço: Rua s/Nr.
 - Teófilo Otoni-MG

Proprietário:

Escalas: Indicadas

Desenho: Fev. 2018

Revisão: Maio 2018

Desenho: 03

Folha: 03/03

Data: 15/10/2018